



New

**Caratteristiche:**

Diffusori multidirezionali a 4 vie su pannello 595x595 con parte centrale chiusa.

Costruzione:

Alluminio verniciato bianco RAL 9010.

Impiego:

A soffitto, in mandata e ripresa.
Altezza di installazione:
2,5 - 3,1 m

Fissaggio:

Fissaggio a viti nascoste posizionate sul collo del diffusore.

Accessori:

- Plenum in acciaio zincato standard o isolato, con o senza rete equalizzatrice.
- Serranda di taratura in acciaio zincato con alette a movimento contrapposto.

Characteristics:

Multidirection diffuser with 4 ways on 595x595 panel and closed central plug.

Construction:

Aluminium painted white RAL 9016.

Utilization:

For ceiling installation and for air intake and delivery.
Installation height: 2,5 - 3,1 m

Fixing:

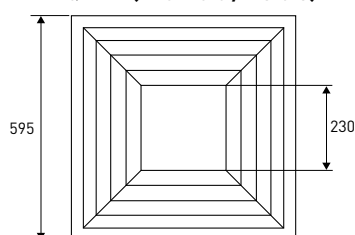
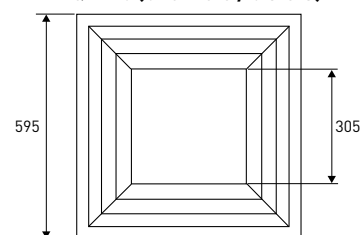
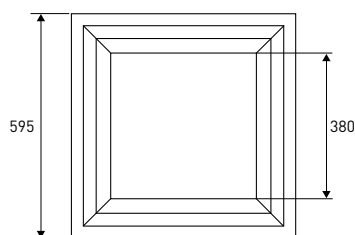
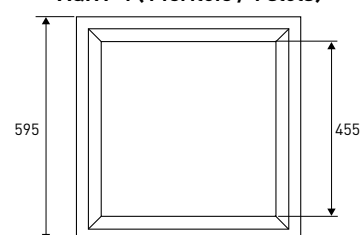
Fixing by using screws on the diffuser neck.

Accessories:

- Galvanized steel plenum, standard or insulated, with or without equalizer sheet.
- Calibration damper made of galvanized steel and fins with opposite movement.

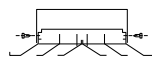
PREZZI / PRICES

AQNT		AQNT	SCN	PDZ-1	PDZI-1	PDZ-2	PDZI-2
	BxH (mm)	€	€	€	€	€	€
AQNT-1	450x450 (595 esterno cornice)	-	-	-	-	-	-
AQNT-2		-	-	-	-	-	-
AQNT-3		-	-	-	-	-	-
AQNT-4		-	-	-	-	-	-

DISEGNI / DRAWINGS**AQNT-4 (4 feritoie / 4 slots)****AQNT-3 (3 feritoie / 3 slots)****AQNT-2 (2 feritoie / 2 slots)****AQNT-1 (1 feritoia / 1 slots)****MONTAGGIO E RACCORDO
MOUNTING AND CONNECTIONG****Raccordo sul canale quadrato
Connecting to square duct**

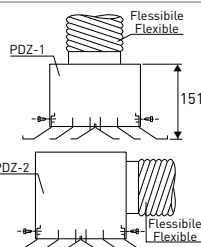
Inscatolare il diffusore nel canale.
Fissare il diffusore con viti.

Insert the diffuser into the duct.
Fix the diffuser by screws.

**Raccordo sul canale
flessibile con plenum****Connecting to flexible duct
by plenum**

Inscatolare il diffusore nel plenum PDZ-1 / PDZ-2.

Fissare il diffusore con viti.
Insert the diffuser into the plenum PDZ-1 / PDZ-2.
Fix the diffuser by screws.

**Taratura • Refistering**

Possibilità di installare una serranda in ogni configurazione.

Fissare con clips la serranda sul diffusore.

It is possible to install a damper for any configuration.
Fix the damper by clips on the diffuser.

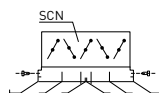
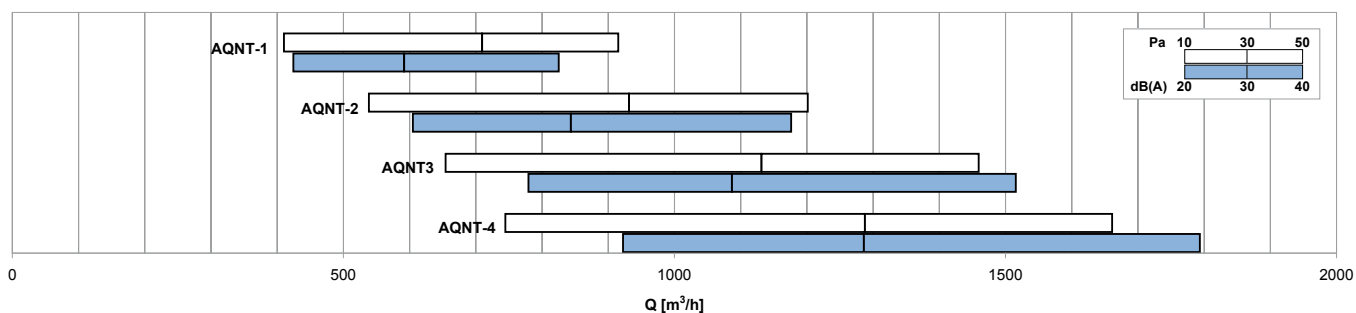
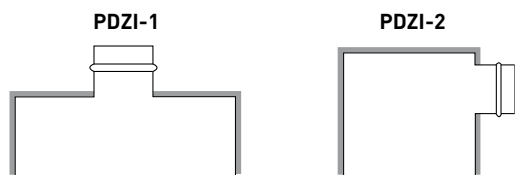
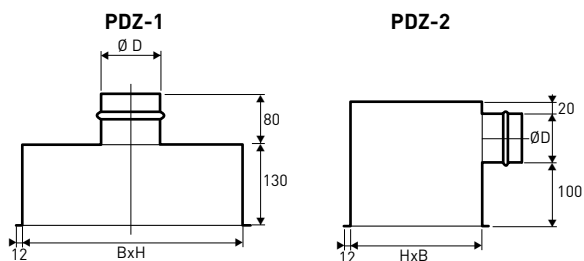


DIAGRAMMA SCELTA RAPIDA / QUICK SELECTION DIAGRAM

TABELLA DI SELEZIONE / SELECTION TABLE

Modello Model	A_x [m²]	No. Vie N. way	Q [m³/h]		L_{WA} [dB(A)]		$X_{(0,25)}$ [m]		D_p [Pa]	
			min	max	min	max	min	max	min	max
AQNT-1	0,0698	4	740	1660	< 20	38	1,18	5,88	10	50
AQNT-2	0,0631	4	650	1460	< 20	39	1,19	5,97	10	50
AQNT-3	0,0542	4	540	1200	< 20	41	1,22	6,10	10	50
AQNT-4	0,0438	4	410	920	< 20	43	1,26	6,29	10	50

DISEGNI / DRAWINGS


Plenum isolato esternamente spessore 6 mm
 Plenum externally insulated thickness 6 mm